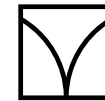


VICTORIA BUILDINGS  
THE ALBERT ESTATE

---

FOURTH FLOOR

NET INTERNAL AREA:  
236 m<sup>2</sup> / 2540 ft<sup>2</sup>

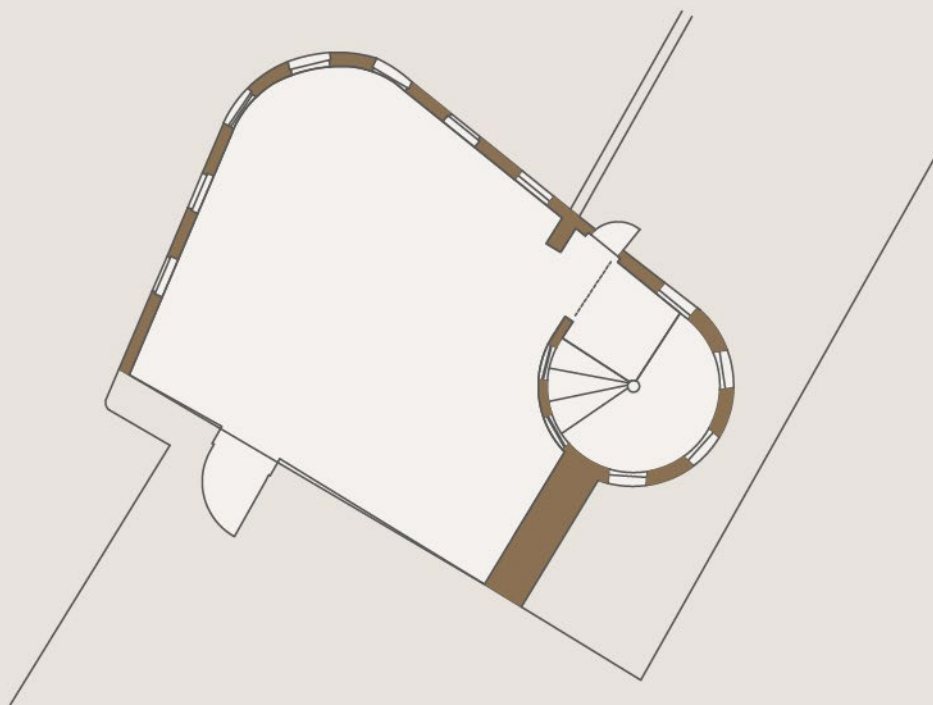


VICTORIA BUILDINGS  
THE ALBERT ESTATE

---

FOURTH FLOOR

NET INTERNAL AREA:  
236 m<sup>2</sup> / 2540 ft<sup>2</sup>

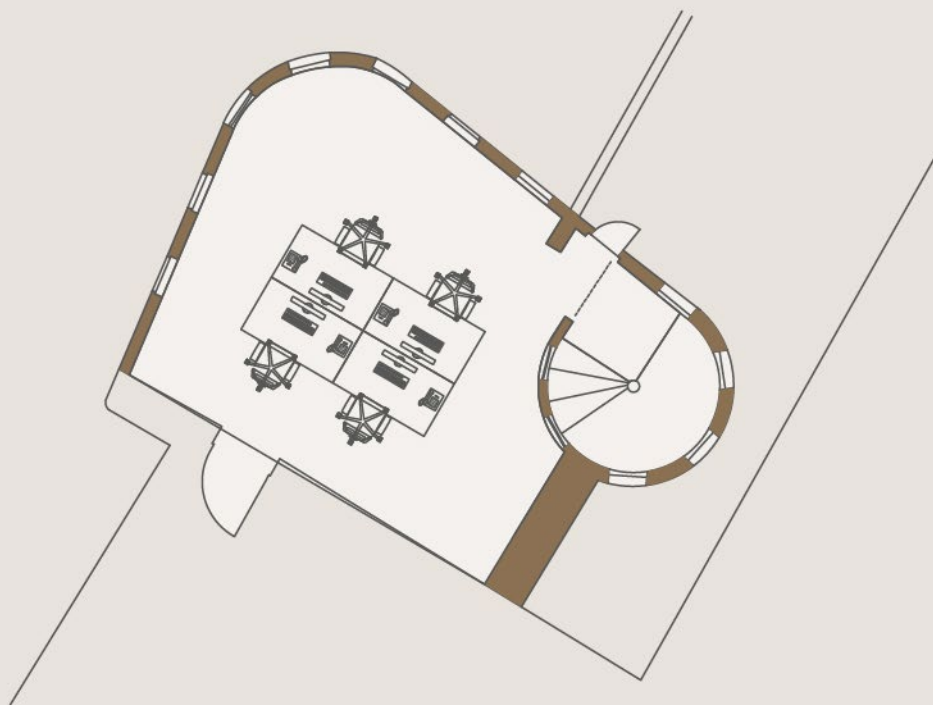


VICTORIA BUILDINGS  
THE ALBERT ESTATE

---

FIFTH FLOOR

NET INTERNAL AREA:  
26 m<sup>2</sup> / 280 ft<sup>2</sup>



VICTORIA BUILDINGS  
THE ALBERT ESTATE

---

FIFTH FLOOR

NET INTERNAL AREA:  
26 m<sup>2</sup> / 280 ft<sup>2</sup>